



Project Fact Sheet

PROJECT OVERVIEW

The Florida Department of Transportation (FDOT) is conducting a Project Development and Environment (PD&E) Study for proposed improvements to the SR 968 / SW 1st Street Bridge over the Miami River. The project limits are from SW 5th Avenue to SW 2nd Avenue, a distance of approximately 0.3 miles. The study includes evaluation of rehabilitation and replacement alternatives that address safety, operational functionality and aesthetics. The existing bridge is a low-level bascule (movable) bridge spanning the Miami River and carrying the eastbound lanes of a one-way pair facility comprised of Flagler Street (westbound lanes) and SW 1st Street. Existing navigational clearances are 14 feet vertically above the fender system and 75 feet horizontally between the fenders. The United States Coast Guard (USCG) guide clearances for this section of the Miami River are 21 feet vertical and 125 feet horizontal.

PLANNING, DESIGN AND CONSTRUCTION

The PD&E Study was initiated in July 2010 and is expected to be completed in May 2013. After the completion of the PD&E stage, Final Design of the selected preferred alternative should be completed by late 2016. Construction is estimated to take approximately 30 months.

NEEDS ASSESSMENT

The existing bridge has exceeded its design life by approximately 30 years. The most recent Bridge Inspection Report yielded a sufficiency rating of 56.3 on a scale of 100.0. The bridge's superstructure displays advanced corrosion with section loss for several members that are significant enough to warrant supplemental supports and/or load restrictions, major deficiencies in the bridge tender facility, and major deck pavement deterioration. It also exhibits major misalignment of superstructure elements, under deck cracks, failure of compression joints, and delamination and cracks on pier walls and abutments.

FINANCE

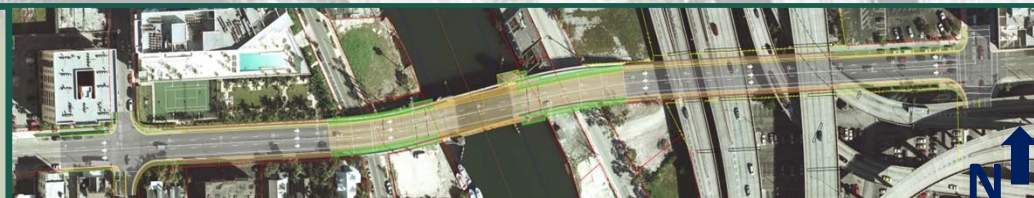
Federal and state funding is allocated for future Phases of the project, including Design and Construction. Construction costs will be estimated during the PD&E study.

PROJECT STATUS

The PD&E study was initiated in July 2010. A project Alternatives Public Workshop was held on November 11, 2011 at the Lummus Park Community Center.

For additional information about the project, please contact Bao-Ying Wang, P.E., Project Manager. She can be reached by telephone at (305) 470-5211, or by e-mail at

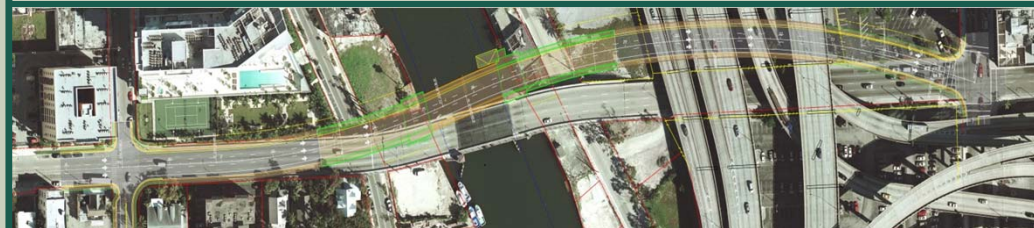
baoying.wang@dot.state.fl.us



Alternative 1 Existing Alignment



Alternative 2 South Alignment



Alternative 3 North Alignment



❖ Rendering is shown to depict the height and scale of a replacement movable bridge and does not represent a proposed bridge design.